


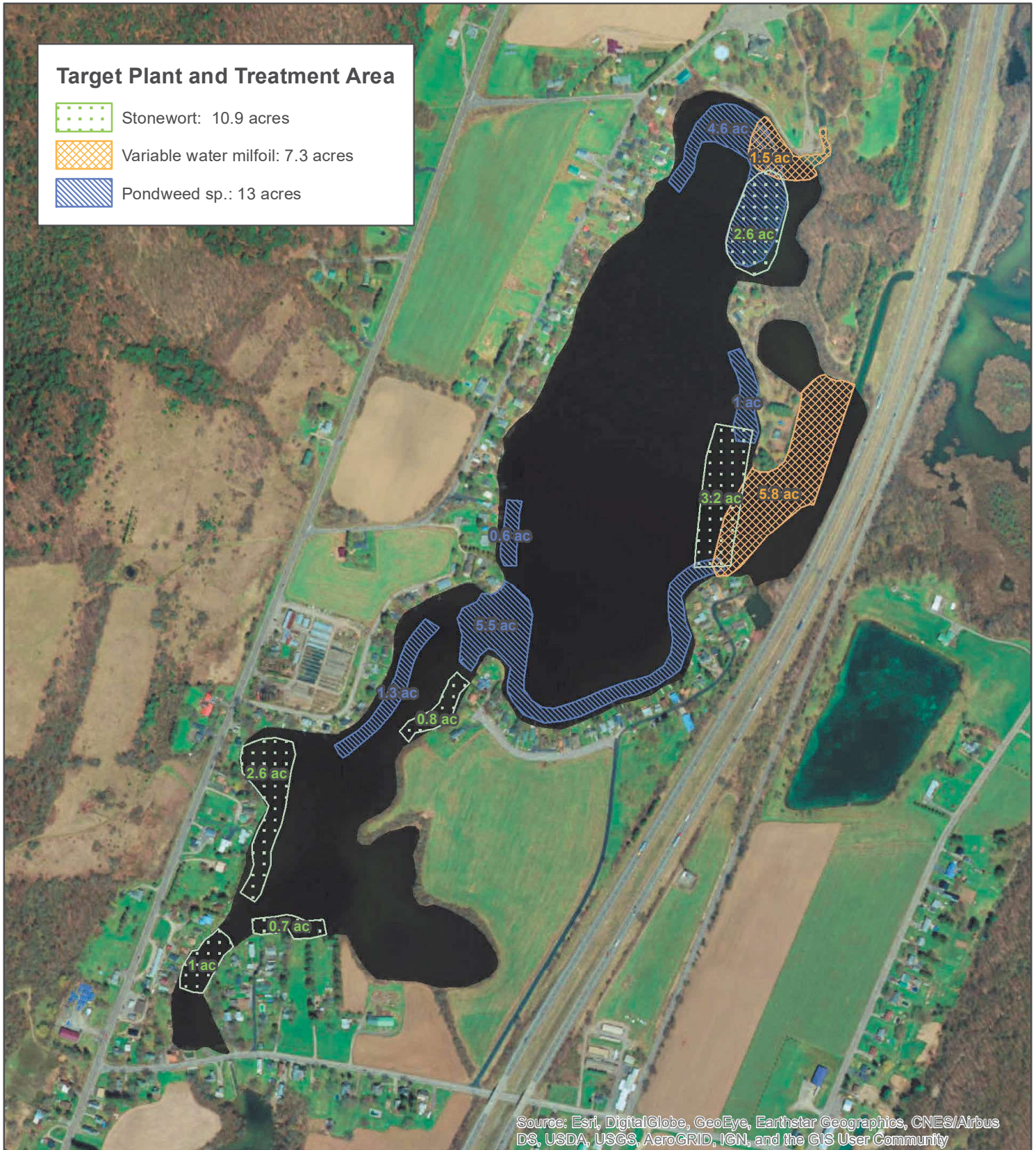


**Target Plant and Treatment Area**

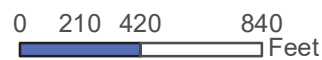
-  Stonewort: 10.9 acres
-  Variable water milfoil: 7.3 acres
-  Pondweed sp.: 13 acres



Source: Esri, DigitalGlobe, GeoEye, Earthstar Geographics, CNES/Airbus DS, USDA, USGS, AeroGRID, IGN, and the GIS User Community

**LITTLE YORK LAKE**  
Homer /Preble, NY  
[Cortland County]  
42.70427°, -76.15453°

**LITTLE YORK LAKE**



Date: 11/11/2020  
File: LittleYork\_TreatMapOverview\_2021  
Prepared by: KM  
Office: Washington, NJ